

HeaterLine

Heater Type Steam Humidifiers
For Various Water Qualities



HYGROMATIK[®]
WE HUMIDIFY THE AIR



Compact. Easy Maintenance. Stainless Steel.

The new HeaterLine series offers compact unit dimensions and extremely low maintenance. The cylinders and cabinets are made of high-quality, high-grade corrosion resistant stainless steel.

The demountable cover offers easy access to the components from three sides.

HeaterLine is offered in 8 different unit types with maximum steam generating capacities of 6-90 kg/h available in two compact sized dimensions. It can be operated with demineralized, softened or tap water.

Best by Design

- compact and space-saving – even when using tap water
- the new rinsing and scale collecting system allows for easy maintenance
- cabinet and steam cylinder are made of high-grade corrosion resistant stainless steel
- proportional control of up to $\pm 1\%$
- hygienic humidification with mineral-free steam

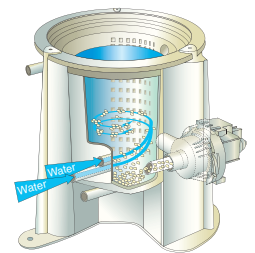


Combined Rinsing and Scale Collecting System

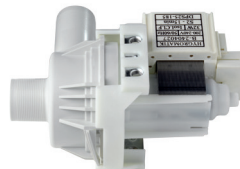
During operation with demineralized or tap water, the minerals contained in the water are turned into scale deposits.

The integrated rinsing system induces an eddy during the partial blow-down. Thus scale particles are whirled up and can be expelled using the powerful blow-down pump. The amounts of scale deposits collected in the filter are clearly reduced.

The remaining scale deposits are accumulated in the sturdy removable filter and can be removed without any chemicals during maintenance. Connectors, cylinder tension ring and steam hose adapter make maintenance quick and easy. The system is integrated into the unit, permitting for HeaterLines's compact dimensions, even when using tap water. When using demineralized water, there are practically no deposits so that servicing requirements are reduced to a minimum.



In the high-grade stainless steel cylinder, 1 to 5 high-quality, stainless steel heating elements heat up the water according to the immersion boiler principle. The float switch and mechanical over temperature sensor work together allowing control of the water level and providing protection against dry-run.



The heavy-duty blow-down pump supports the combined rinsing and scale collection system by draining the scale deposits. The deposits are discharged, before accumulating in the first place. This reduces the quantity of scale in the filter and lengthens servicing intervals.

Exact Control. Fast Response.

High performance microprocessors control and monitor the new HygroMatik heater type steam humidifiers ensuring outstanding controllability and fast precise response.

During operations with demineralized water, the Comfort and Comfort Plus controls offer a controllability of up to +/- 1%. The units intelligently adapt to the existing water quality. Stand-by blow-down feature prevents standing water in the cylinder according to German VDI 6022. The HeaterLine can be controlled proportionally within a range of 5-100% of the rated power output.

The controls accept all standard control signals. **Remote control** or **Master-Slave operation** optional.

Certified Quality
VDE, GS and CE

The Microprocessor Controls

Basic

- proportional or on/off control
- automatic system test
- 5 LED's to indicate important operation information
- 2 potential free remote signals
- stand-by heating for rapid steam production
- integrated interface RS485



The Comfort units include additionally

- integrated PI control
- back-lit LC display
- 4 function keys for easy operation and programming

Comfort Plus additionally provides

- encoder for very easy operation and programming
- timer function



Our service for you

- HygroMatik distributors in more than 35 countries worldwide
- Technical Hotline Telephone
- Manuals and information material at www.hygromatik.com





Technical Data HeaterLine

Type		HL06	HL09	HL12	HL18	HL24	HL27	HL30	HL36	HL45	HL60 2x HL30	HL70 2x HL36	HL80 HL36+HL45	HL90 2x HL45
Steam output	[kg/h]	6	9	12	18	24	27	30	36	45	60	72	81	90
Number of units		1	1	1	1	1	1	1	1	1	2	2	2	2
Electrical supply/unit		400V/3/N 50-60Hz*												
Electrical power/unit	[kW]	4,5	6,8	9,0	13,5	18,0	20,3	22,5	27,0	33,8	22,5	27,0	1x27,0/1x33,8	33,8
Current/unit	[A]	11,3	16,9	19,5	29,3	39,0	29,3	39,0	58,5	58,5	39,0	58,5	58,5	58,5
Fuse/unit	[A]	3x16	3x20	3x25	3x35	3x40	3x35	3x50	3x63	3x63	3x50	3x63	3x63	3x63
Control/unit		Basic, Comfort, Comfort Plus												
Number of heating elements/unit		1	1	2	2	4	3	5	4	5	5	4	1x4, 1x5	5
Steam hose connection/unit	[mm]	1x25**	1x25**	1x25**	1x40	1x40	1x40	1x40	2x40, Y-piece included		1x40	2x40, Y-piece included		
Condensate hose connection/unit	[mm]	1x12	1x12	1x12	1x12	1x12	1x12	1x12	2x12, T-piece included		1x12	2x12, T-piece included		
Empty weight/unit	[kg]	35	35	36	36	38	37	46	45	46	46	45	1x45, 1x46	46
Operational weight/unit	[kg]	48	48	49	49	51	50	72	71	72	72	71	1x71, 1x72	72
Dimensions/unit	Height [mm]	865	865	865	865	865	865	900	900	900	900	900	900	900
	Width [mm]	645	645	645	645	645	645	685	685	685	685	685	685	685
	Depth [mm]	335	335	335	335	335	335	395	395	395	395	395	395	395
Water supply		Fully demineralised water/cleaned condensate/ partially softened or standard tap water, 1 to 10 bar, for connection 3/4"												
Fan unit, wall mounted/unit		VG08	VG17	VG17	VG30	VG30	VG30	VG30	2xVG30	2xVG30	VG30	2xVG30	2xVG30	2xVG30
Air circulation of fan unit/unit	[m ³ /h]	160	185	185	350	350	350	350	2x350	2x350	350	2x350	2x350	2x350

*other voltages on request

** reduction DN40 to DN25 included

Subject to technical amendments without notice

HygroMATIK
WE HUMIDIFY THE AIR

Airtrend Ltd.-Gobrid Ltd.

Kumanovska 14

11000 Beograd

Tel. (011) 383 68 86, 308 57 40

Faks (011) 344 41 13

E-mail: gobrid@eunet.rs