



We bring air to life

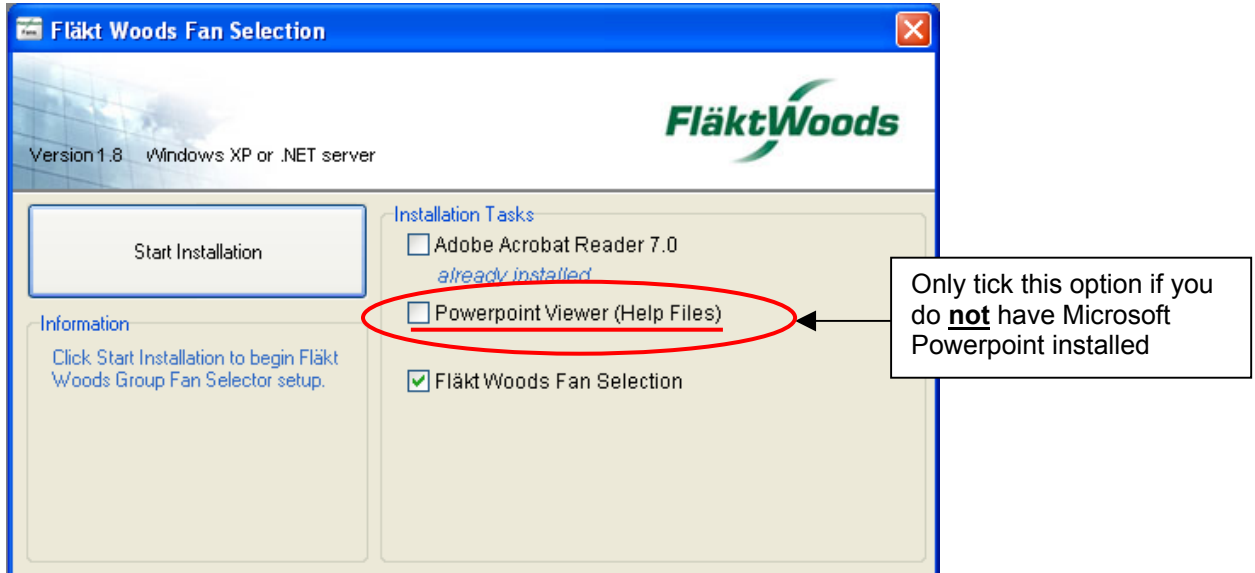
Fläkt Woods Group Selector

Software Installation and Quick Start Instructions (CD version 2.0M)

Engine/GUI 2.5.0.0 version or higher

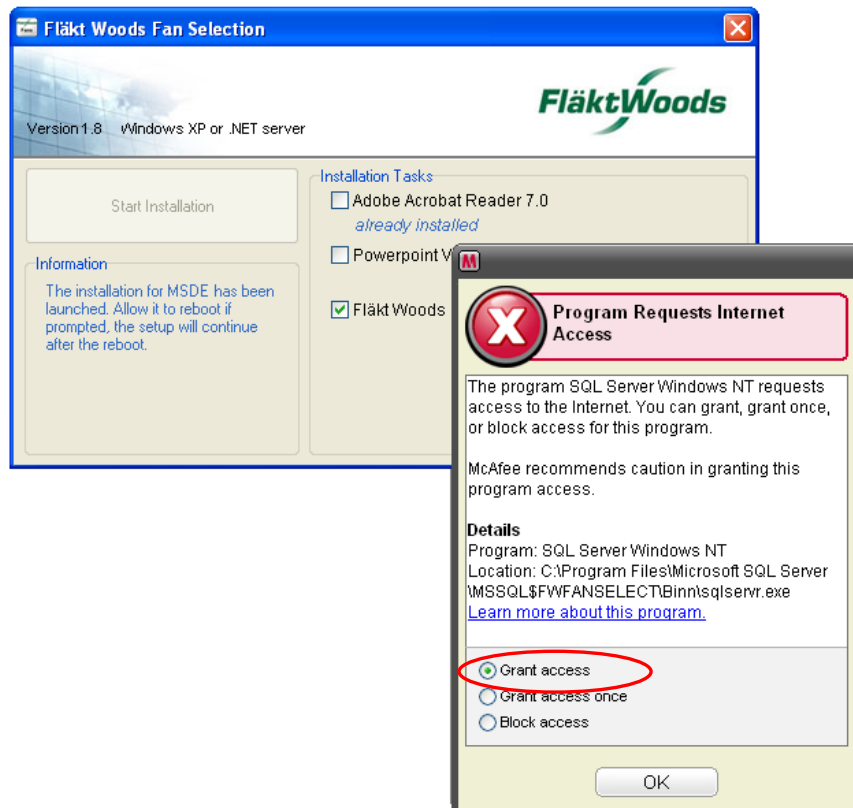
Fläkt Woods Fan Selector Installation Instructions

- 1) Make sure that the PC or Laptop is connected to the Internet before you start installation.
- 2) Log your PC / Laptop in as a Local Administrator (must have rights to install software).
- 3) Insert the CD-ROM into the drive and allow it to auto run. Installation menu will automatically launch.



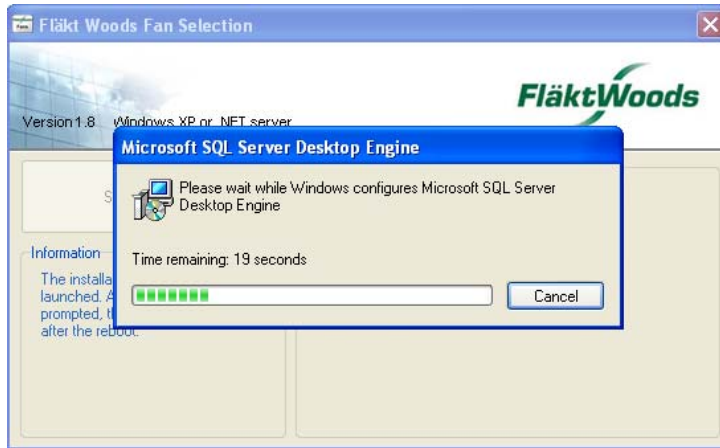
If Adobe Acrobat Reader is not installed, the installation software will detect this and install it for you. If you do **not** have Microsoft Powerpoint already installed then you can install Powerpoint viewer software, to enable you to view this type of file. This is the format used for the help files that are contained within the software.

- 4) If you have **Internet Security** software installed, which includes a **Firewall**, You may see a Pop-up window at this point (as shown below). When prompted, click the **Grant Access** option.

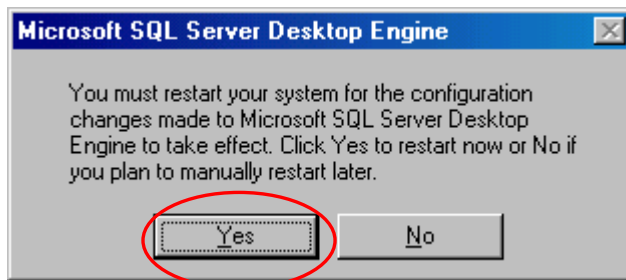


Fläkt Woods Fan Selector Installation Instructions

- 5) Click the **Start Installation** button to begin. With the above choices, the first module to be installed is the Database Engine, which is part database handling software related to the Fan Selection package.



- 6) Once this part of the installation is complete, you may be prompted to restart your system. Under some circumstances, you may have to do this manually (i.e. older operating systems). Newer operating systems (Windows XP) do not need to carry out a re-boot of your system. If you see this dialog, please click **Yes** to continue.



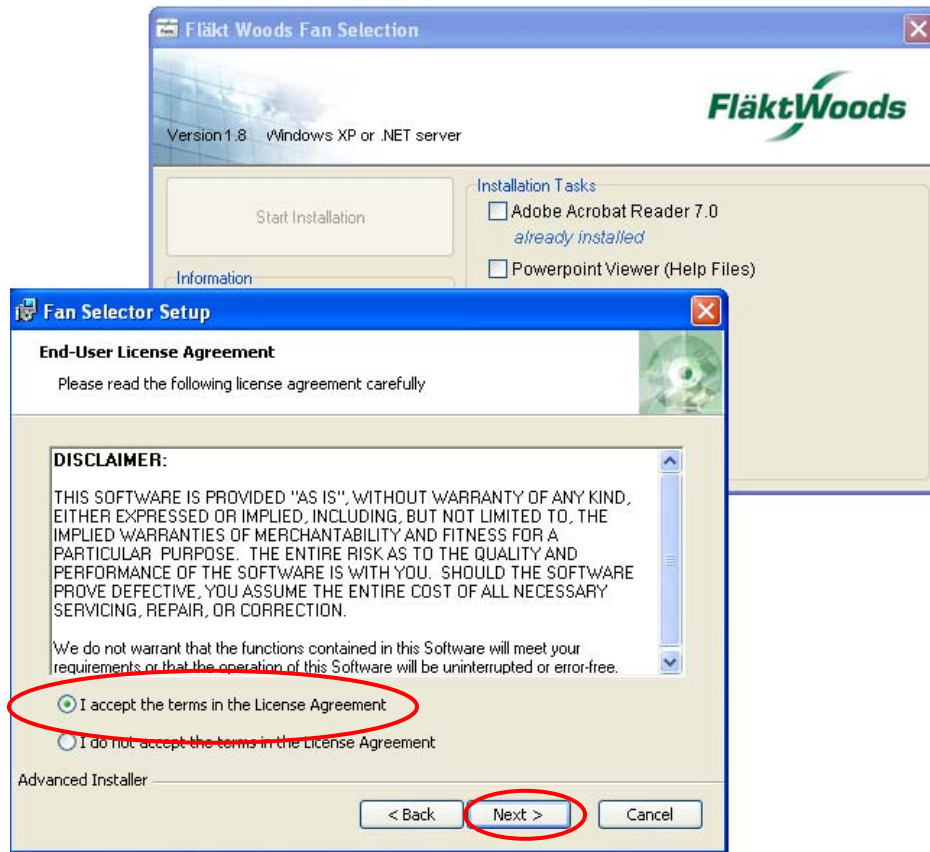
- 7) The next part of the installation is the Fan Selection software itself.



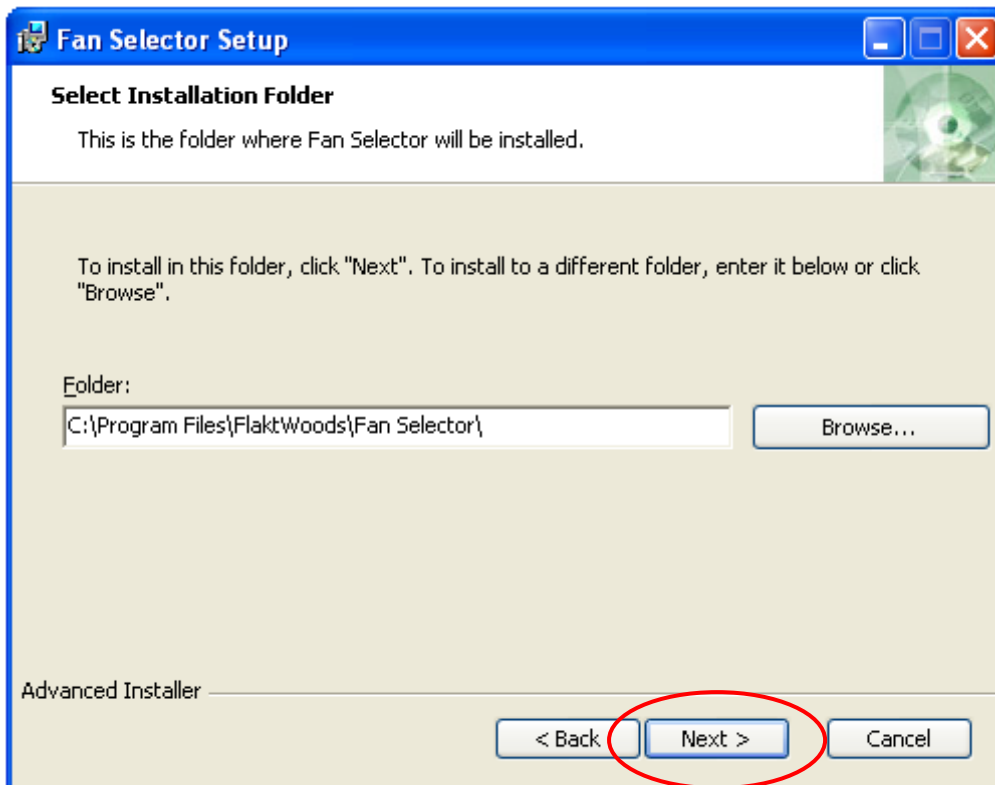
Click the **“Next >”** button to continue.

Fläkt Woods Fan Selector Installation Instructions

8) Click "I accept the terms in the License Agreement", then click **Next >**.

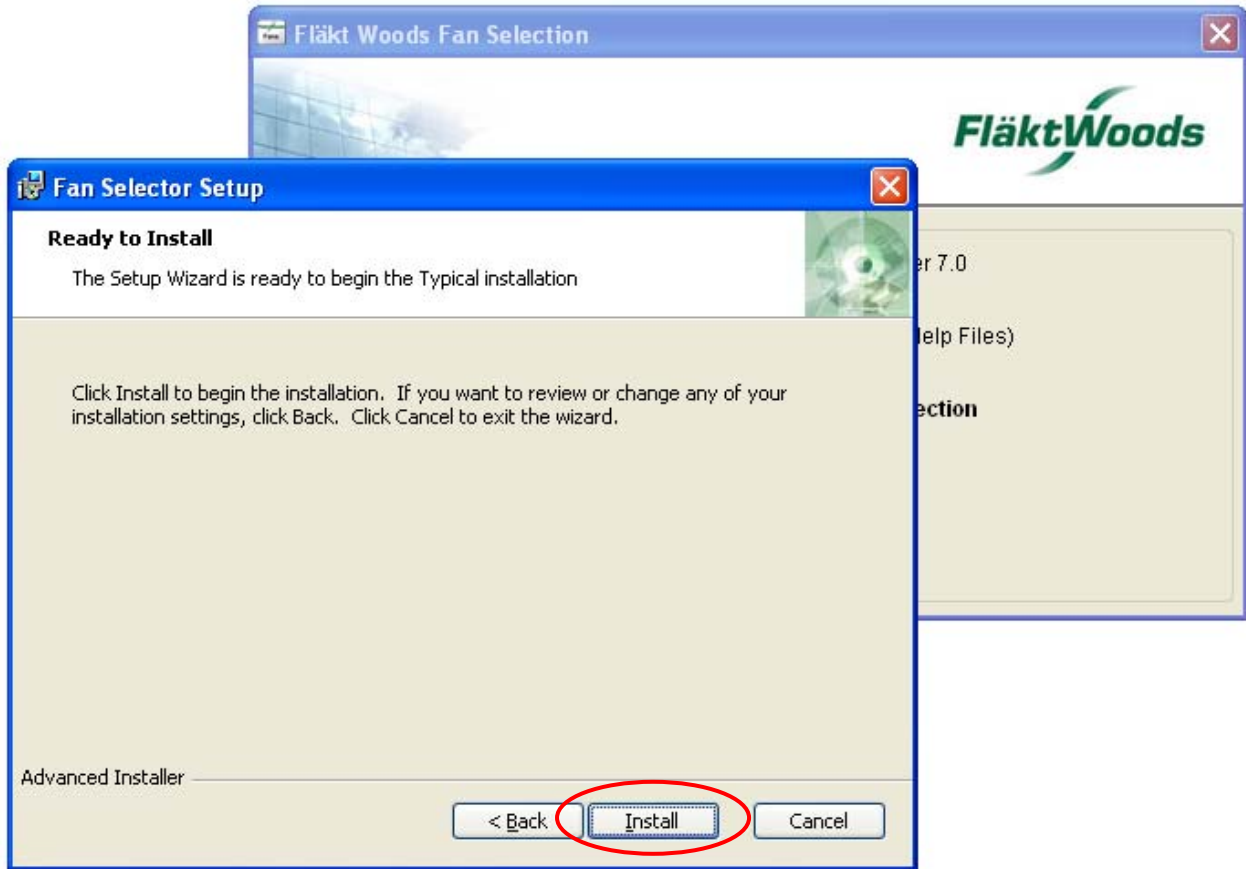


9) To accept the default installation location (recommended) click **Next >**.

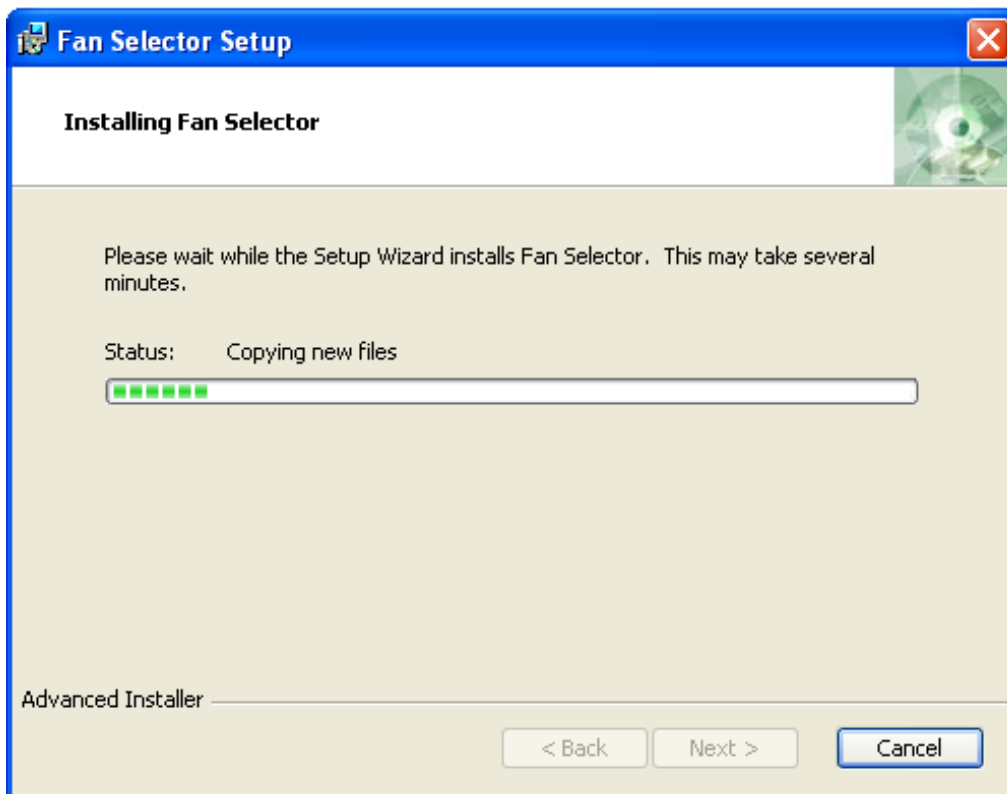


Fläkt Woods Fan Selector Installation Instructions

10) Begin the installation process by clicking the **Install** button.



11) Files will then be copied onto your hard drive.



Fläkt Woods Fan Selector Installation Instructions

12) Click **Finish** to complete the installation.

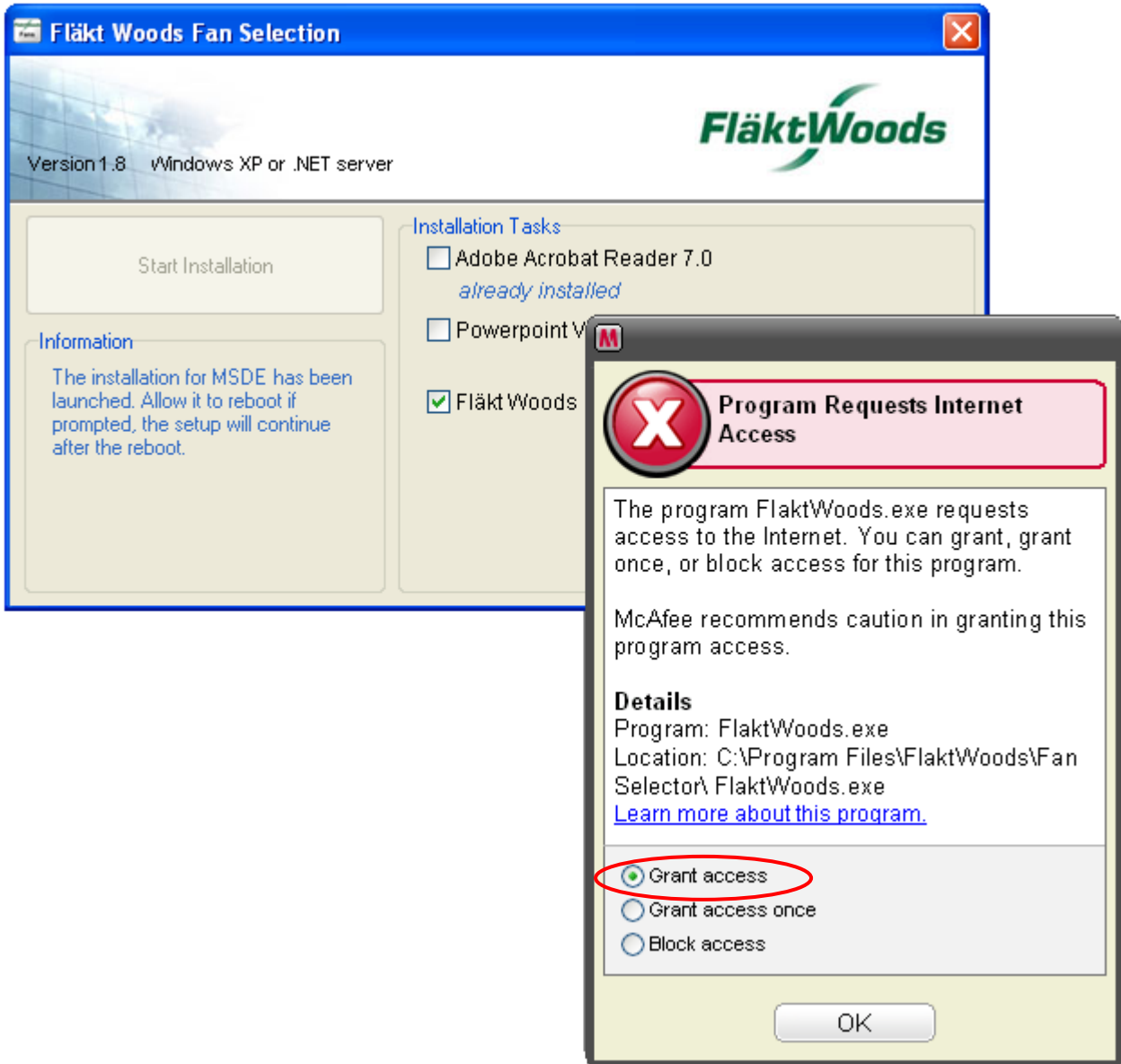


13) The following dialogue confirms installation. Click "**OK**" to continue.



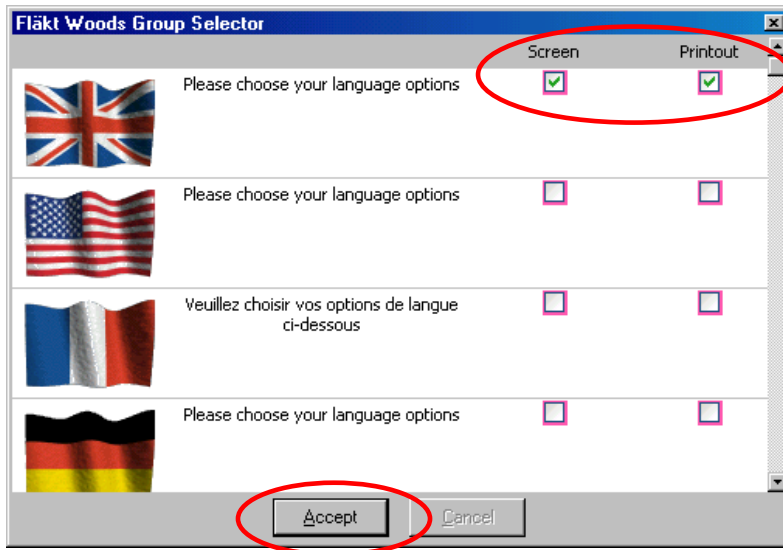
Fläkt Woods Fan Selector Installation Instructions

- 14) If you have **Internet Security** software installed, which includes a **Firewall**, You may see another Pop-up window at this point (as shown below). When prompted, click the **Grant Access** option.



Running the Fläkt Woods Group Selector

Before running the program make sure that you have your PC / Laptop connected to the Internet. On running the software you will be presented with a language selection dialog.



Click in both the “Screen” and “Printout” language checkboxes and then click the **Accept** button.

At the Registration screen, if you already have a Web account, choose "Login". Otherwise click “Register”.



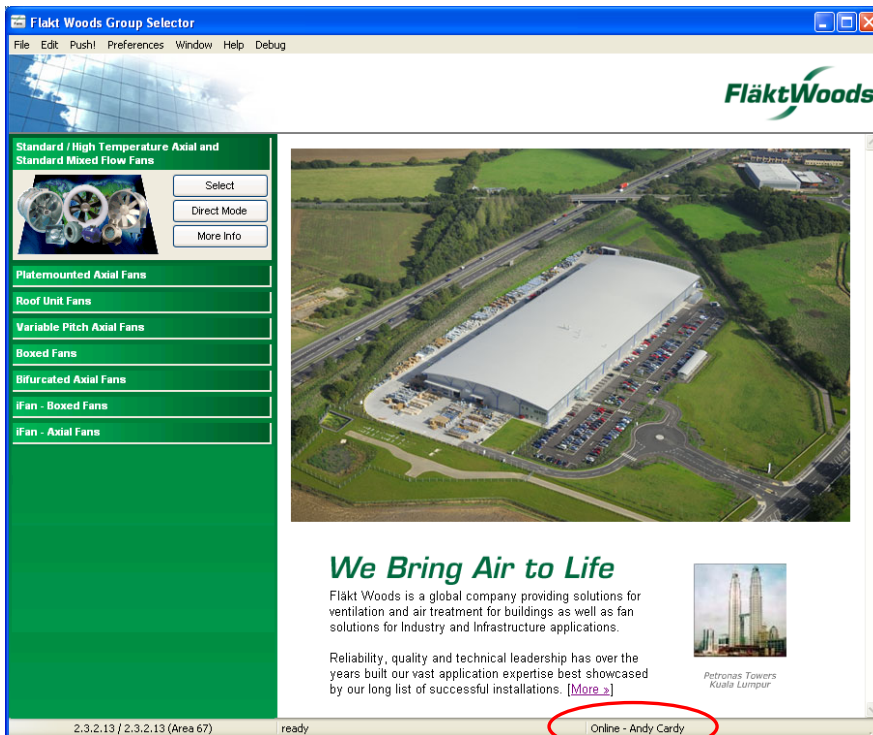
Running the Fläkt Woods Group Selector

At the next registration screen enter your user name (**e-mail address in full**) and **password** (which should have been e-mailed to you soon after you registered via our Web site or by means of the Register option shown in the previous step).



Click "**Confirm**" after entering your User Name and Password, then "**Next**". Follow on screen prompts.

The Software main screen should then be displayed.



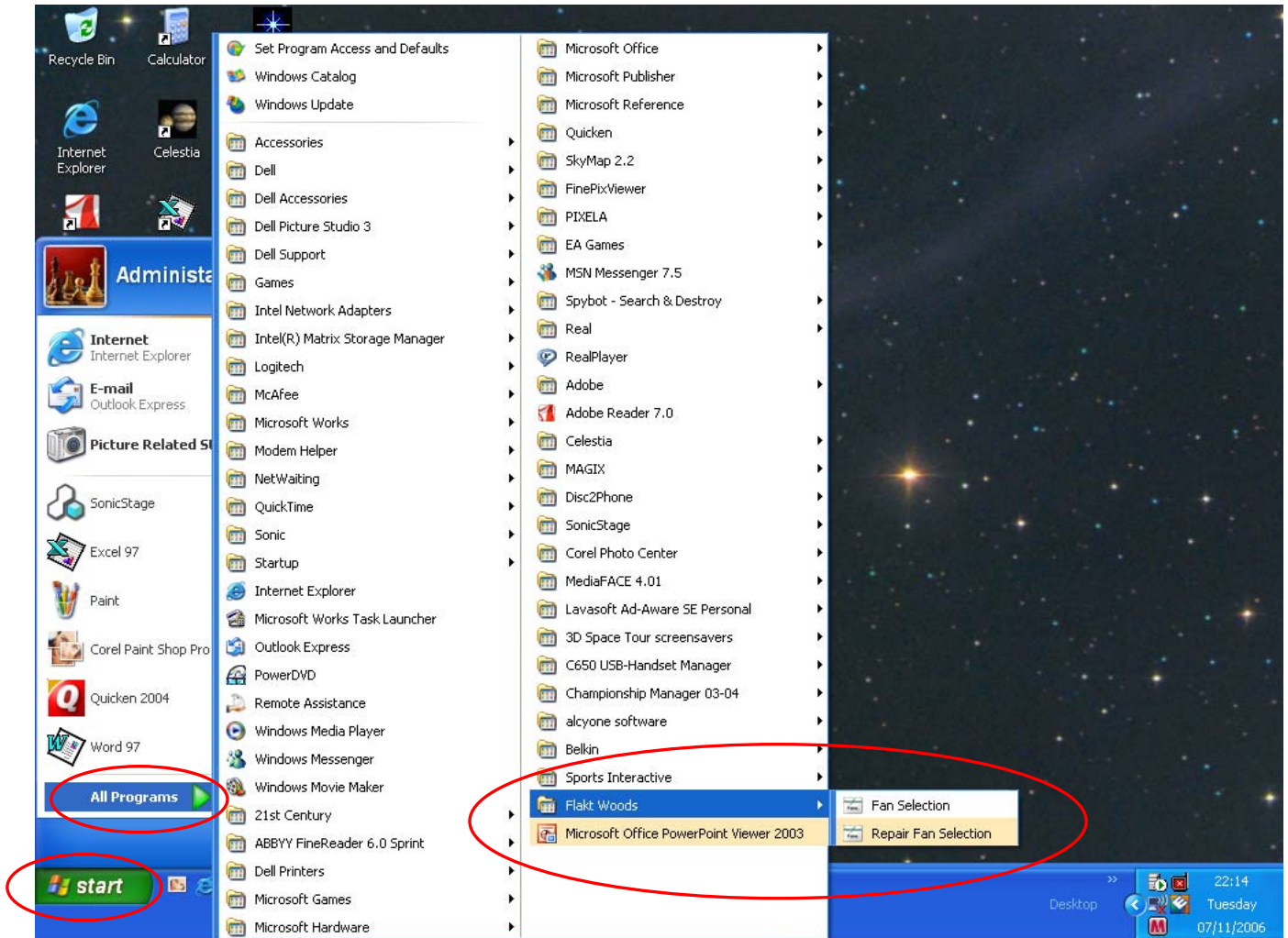
Note: If you are connected to the Internet, the software will confirm that you are “Online”. If this shows “Cached”, YOU WILL BE UNABLE TO RECEIVE UPDATES! Please seek help from Fläkt Woods UK.

Running the Fläkt Woods Group Selector

The Software can either be run by double clicking the desktop icon as shown below.



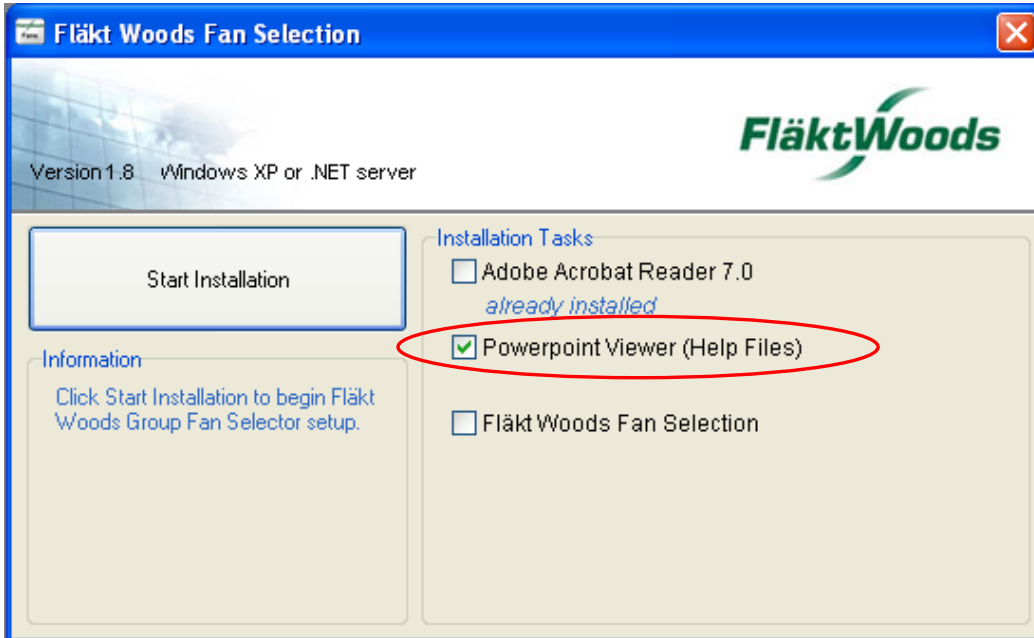
OR from the "Start Programs menu (as shown below).



Fläkt Woods Fan Selector Installation Instructions – Powerpoint Viewer

Should you wish to install the Powerpoint Viewer software (for example, if you do not have the full version of Microsoft Powerpoint installed) this can either be done as part of the main installation process by ticking the checkbox next to the “Powerpoint Viewer (Help Files)” option. See below.

Alternatively, the installation CD can be inserted and run for a second time, with ONLY the “Powerpoint Viewer (Help Files)” option checkbox ticked as shown below.



Click the **Start Installation** button to begin. With the above choice, only the Powerpoint Viewer will be installed.



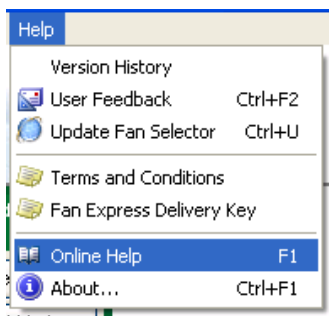
Click **OK** to continue.

Fläkt Woods Fan Selector Installation Instructions – Powerpoint Viewer

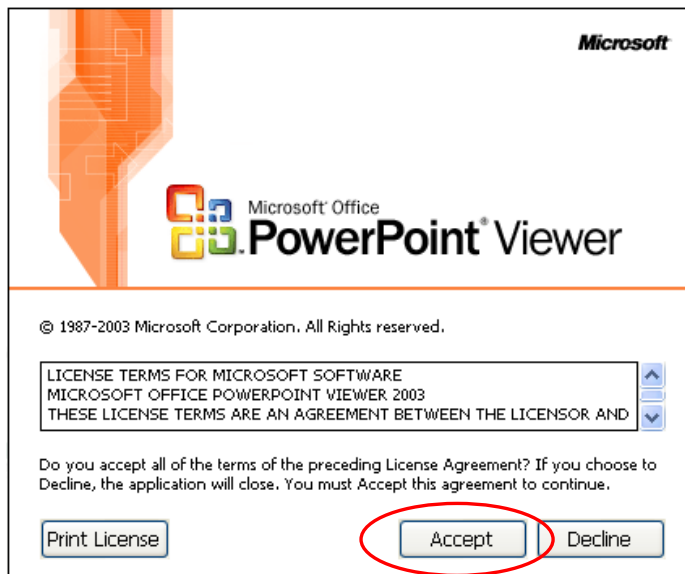
Once the Installation process has been completed, click the “OK” button.



The Powerpoint Viewer can now be used to view Help Files. To access help files choose the “Help | Online Help” option from within Fan Selector software (see below).



After a help file link has been clicked (for the first time), the Powerpoint viewer license agreement will be displayed. Click the “Accept” button to continue.



Fläkt Woods Fan Selector – Firewall Information

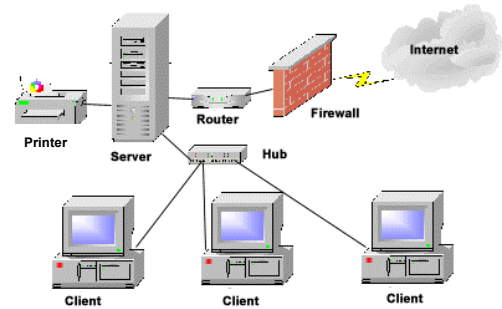
It is important to make sure that if you are using firewall software on your PC, that you allow the fan Selection Software to access the Internet. This is required to enable the fan selection software to receive updates.

What is a firewall?

A system designed to prevent unauthorized access to or from a private network. Firewalls can be implemented in both hardware and software, or a combination of both.

Firewalls are frequently used to prevent unauthorized Internet users from accessing private networks connected to the Internet, especially intranets.

All messages entering or leaving the intranet pass through the firewall, which examines each message and blocks those that do not meet the specified security criteria.



What Firewalls are available?

There are several solutions that can be installed to give Firewall protection on your PC. Some of the more common ones are:-

Windows XP In-built Firewall
Zone Alarm
Black Ice Defender

Norton Internet Security / Personal Firewall
McAfee Personal Firewall

How do I check my settings?

This is a difficult question to answer due to the number of different programs. As a guide however you need to look under areas relating to restricted programs or program access control. In these areas you should see a list of all programs that have been blocked or are allowed to access the Internet.

What should the settings be?

There are two applications that form the core of the fan selection software, both of these need to have access to and from the Internet. These are :-

FLAKTWOODS.EXE

WEBUPDATE.EXE

Programs ▲	Access		Server		Lock
	Trusted	Internet	Trusted	Internet	
Group Fan Selector UI	✓	✓	?	?	
WebUpdate.exe	✓	✓	?	?	

Extract from Zone Alarm program control

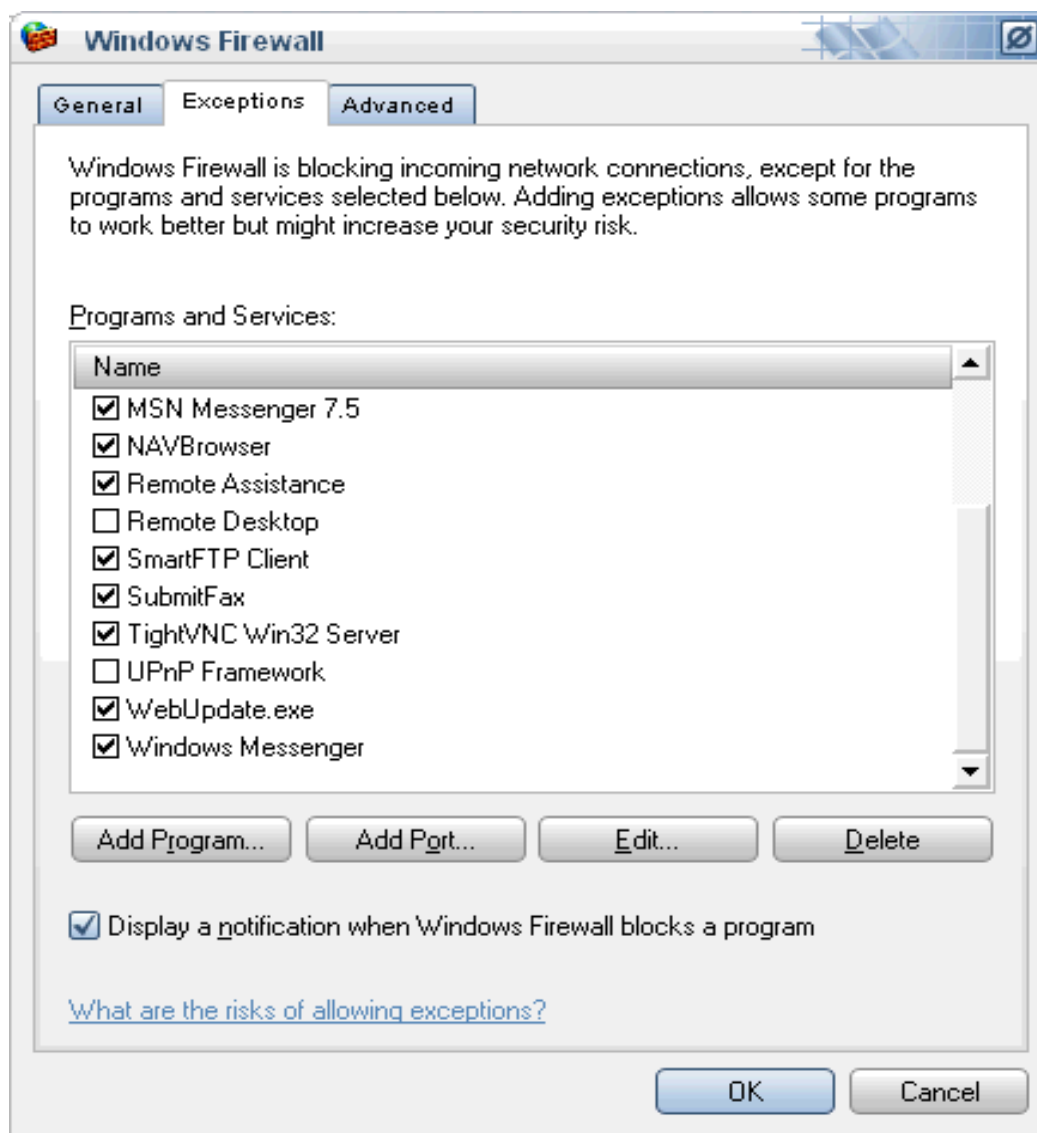
Fläkt Woods Fan Selector – Firewall Information

Windows XP Fire Wall Settings

Windows XP has a built-in Firewall that can be located within the **Control Panel**. We therefore suggest that you open the Firewall application (double-click on the icon) and review which programs are listed.


It is important that you make sure that a Program called “**WebUpdate.exe**” can access the Internet. Below we have shown a set of typical settings for reference. All you need to do is find “**WebUpdate.exe**” in the list and then put a tick in the checkbox next to it, which will then allow it to have Internet access to get updates for your Fan Selector software.

If “**WebUpdate.exe**” is not present in the list, click the “**Add Program**” button and browse option to find this file within the “**C:\Program Files\FlaktWoods\Fan Selector**” folder.



How do I know my program is updating itself?

Every time the Fan Selection software loads it will attempt to locate the latest update files.

The flashing WebUpdate icon  within system tray, denotes that the Update process is active.

If this icon disappears immediately then WebUpdate is being blocked.

Fläkt Woods Fan Selector – Windows Vista Installation and Runtime issues

Although the Fläkt Woods Fan Selector has not been specifically designed be compatible with Windows Vista, it can be installed and run successfully under this operating system.

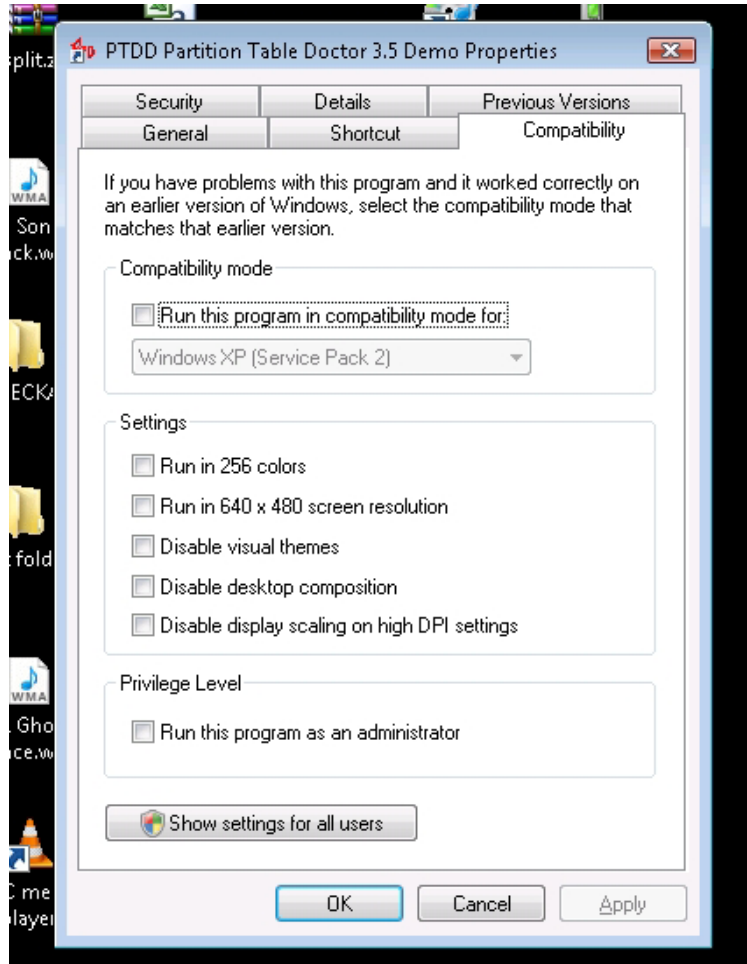
Installation Issues

- 1) **It is mandatory to be logged in as an “Administrator User”** or at the very least as a “Power User”. Attempting to install the Fan Selector whilst the user is logged into Windows Vista as a normal or standard “User” will result in an installation failure.
- 2) During the installation process, the installation CD will attempt to install the database component of our software, but under Windows Vista this part of the installation will cause a **warning message** to be displayed. This will state: **“MSDE is not supported in Windows Vista” and ask if you wish to install this component of the software. You must answer “Yes” to this option otherwise the installation will be incomplete.**
- 3) Although you are not prompted to do so, once the installation has been completed **you should NOT run the Fan Selector software until you have re-booted your computer.**
- 4) Refer to Runtime Issues on page 15.

Fläkt Woods Fan Selector – Windows Vista Installation and Runtime issues

Runtime Issues

- 1) Once your computer has re-started, **before running the Fan Selector software, right mouse click on the desktop icon associated with the Fan Selector**, and choose the **“Properties”** option from the menu.
- 2) In the **“Compatibility”** tab (as shown below), put a tick in the **“Run this program as an administrator”** checkbox, as shown within the **“Privilege Level”** section. **Click the “OK”** button to confirm the change.



- 3) The Fan Selector software can now be run successfully by double clicking on the desktop icon.

It is our intention in the near future to modify the Fan Selector installation CD to enable these system set-up issues to be handled automatically.